

MLS Area HD

Listings	This Month			Year-to-Date		
	Sep 2021	Sep 2020	Change	2021	2020	Change
Single Family Sales	69	111	-37.8%	702	810	-13.3%
Condo/TH Sales	2	1	+100.0%	8	5	+60.0%
Total Sales	71	112	-36.6%	710	815	-12.9%
New Homes Only	5	13	-61.5%	49	134	-63.4%
Resale Only	66	99	-33.3%	661	681	-2.9%
Sales Volume	\$61,952,359	\$62,332,207	-0.6%	\$615,205,689	\$450,129,273	+36.7%
New Listings	118	90	+31.1%	966	950	+1.7%
Pending	77	97	-20.6%	165	913	-81.9%
Withdrawn	8	5	+60.0%	52	71	-26.8%
Expired	1	3	-66.7%	17	31	-45.2%
Months of Inventory	2.1	1.1	+81.2%	N/A	N/A	--

Average	This Month			Year-to-Date		
	Sep 2021	Sep 2020	Change	2021	2020	Change
List Price	\$864,958	\$569,587	+51.9%	\$833,334	\$563,912	+47.8%
List Price/SqFt	\$314	\$201	+56.0%	\$277	\$195	+42.2%
Sold Price	\$872,568	\$556,538	+56.8%	\$866,487	\$552,306	+56.9%
Sold Price/SqFt	\$318	\$198	+60.7%	\$289	\$191	+50.8%
Sold Price / Orig LP	100.8%	98.0%	+2.8%	105.3%	97.7%	+7.8%
Days on Market	15	59	-75.3%	21	65	-68.3%

Median	This Month			Year-to-Date		
	Sep 2021	Sep 2020	Change	2021	2020	Change
List Price	\$765,000	\$499,533	+53.1%	\$717,450	\$525,000	+36.7%
List Price/SqFt	\$285	\$187	+52.1%	\$247	\$182	+35.9%
Sold Price	\$775,000	\$498,820	+55.4%	\$760,000	\$518,900	+46.5%
Sold Price/SqFt	\$295	\$188	+57.0%	\$261	\$181	+44.6%
Sold Price / Orig LP	100.0%	100.0%	+0.0%	103.0%	99.0%	+4.0%
Days on Market	8	18	-54.3%	5	32	-84.4%

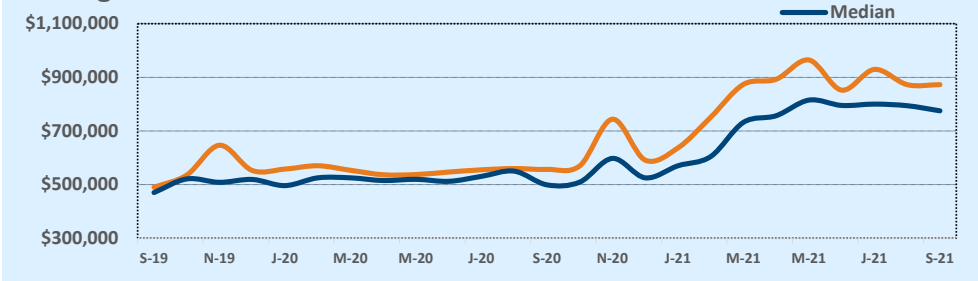
Residential Statistics

Independence Title

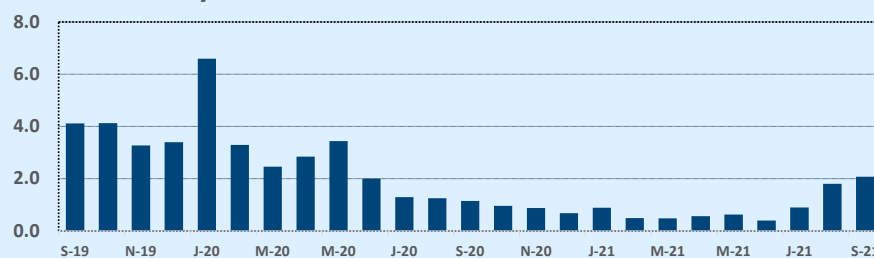
September 2021

Price Range	This Month			Year-to-Date		
	New	Sales	DOM	New	Sales	DOM
\$149,999 or under	--	--	--	--	--	--
\$150,000- \$199,999	--	--	--	--	--	--
\$200,000- \$249,999	--	--	--	2	2	13
\$250,000- \$299,999	1	1	15	4	5	16
\$300,000- \$349,999	--	2	13	7	7	21
\$350,000- \$399,999	1	--	--	13	15	34
\$400,000- \$449,999	3	2	4	59	27	21
\$450,000- \$499,999	12	3	9	71	44	16
\$500,000- \$549,999	11	4	7	51	33	18
\$550,000- \$599,999	10	4	12	80	44	20
\$600,000- \$699,999	10	13	16	141	109	17
\$700,000- \$799,999	16	11	20	150	108	26
\$800,000- \$899,999	12	6	12	118	109	18
\$900,000- \$999,999	16	6	15	74	60	13
\$1M - \$1.99M	22	17	14	149	125	22
\$2M - \$2.99M	3	2	28	34	12	30
\$3M+	1	--	--	13	10	64
Totals	118	71	15	966	710	21

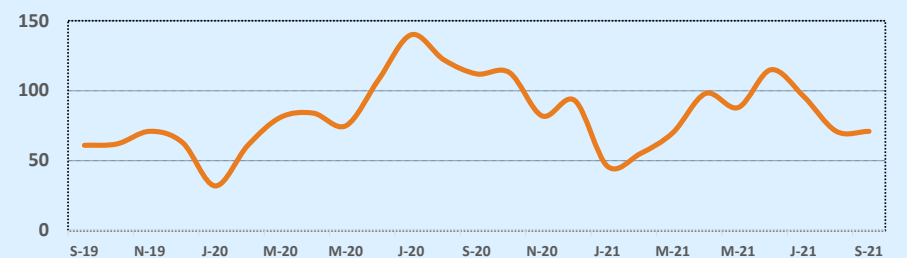
Average & Median Sales Price - Last Two Years



Months of Inventory - Last Two Years



Number of Sales - Last Two Years



Based on information from the Austin Board of REALTORS® (alternatively, from ACTRIS). Neither the Board nor ACTRIS guarantees or is in any way responsible for its accuracy. The Austin Board of REALTORS®, ACTRIS and their affiliates provide the MLS and all content therein "AS IS" and without any warranty, express or implied. Data maintained by the Board or ACTRIS may not reflect all real estate activity in the market.